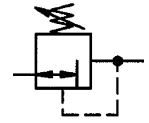


Reversible piston-type pressure regulator, virtually independent of inlet pressure, with self-relieving design, manufactured entirely in brass. Specially designed for high pressures up to 60 bar. Pressure catch with counter nut.



Input pressure: Max. 60.0 bar  
 Operating temperature: -10 °C to +90 °C  
 Sealant: NBR  
 Flow rate measurement: At P1 = 20.0 bar, P2 = 10.0 bar and pressure drop  $\Delta p = 4.0$  bar  
 Applications: Compressed air and other neutral, non-flammable gases  
 Materials:  
 Housing, cap, knob: Brass  
 Filter insert: 500  $\mu$ m stainless steel  
 Screws, spring: Galvanised steel



637.901

637.914

### High-pressure regulators up to 60 bar, incl. pressure gauge

Article No.	Ident No.	Thread	Control rang/bar	Flow rate l/min	A mm	B mm	C mm	D mm
637.901	101147	G 3/8	0.5 – 12	2500	72.0	164.0	31.0	133.0
637.902	101148	G 3/8	1 – 20	2500	72.0	164.0	31.0	133.0
637.903	101149	G 3/8	2 – 35	2500	72.0	164.0	31.0	133.0
637.904	101150	G 3/8	2 – 50	2500	72.0	164.0	31.0	133.0
637.911	101151	G 1	0.5 – 12	5000	118.0	257.0	51.0	206.0
637.912	101152	G 1	1 – 20	5000	118.0	257.0	51.0	206.0
637.913	101153	G 1	2 – 35	5000	118.0	257.0	51.0	206.0
637.914	101154	G 1	3 – 50	5000	118.0	257.0	51.0 </tr	

### Accessories / spare parts for 637.901 – 637.904

Article No.	Ident No.	Description
484.302	101155	Mounting bracket with nut and washer
274-49	101156	Switchboard attachment
280-115	101157	Cone seal complete

### Accessories / spare parts for 637.911 – 637.914

Article No.	Ident No.	Description
302-19	101158	Bracket mounting
302-6	101159	Cone seal complete

